

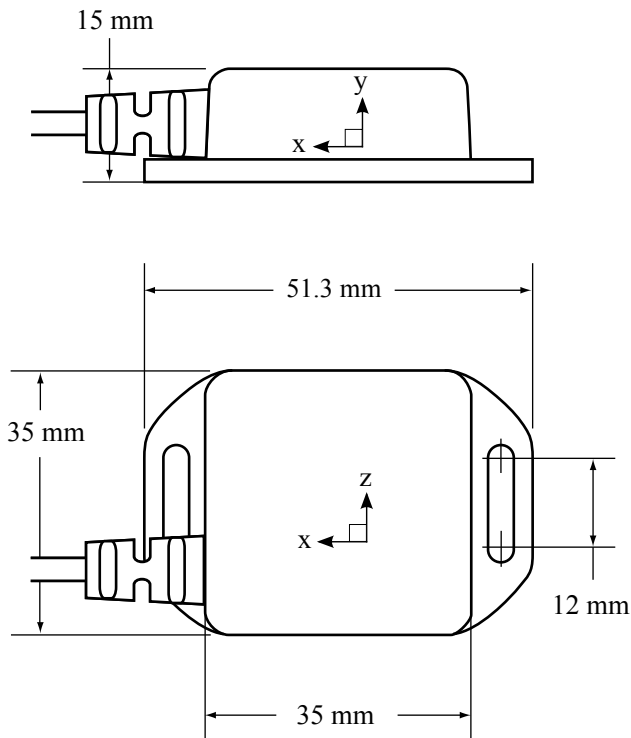
# MotionNode Accel Specification



**MotionNode Accel** is a triaxial accelerometer for use in low-*g* acceleration sensing applications. Our sensor is extremely small, easy to use, and provides a flexible interface to real-time acceleration data.

## Key Features

- Small size, minimizes interference with natural motion
- Outputs 2 *g* or 6 *g* range in all three axes
- Accurate, general purpose accelerometer solution
- Simple USB connection
- Easy to use and integrate into your project or application
- Includes software to configure your sensor, preview output data, and record acceleration data
- Software Development Kit (SDK) provides real-time access to raw and calibrated sensor streams
- Supports Windows, Linux, and Mac operating systems



## Technical

---

<b>Physical size</b>	35 x 35 x 15 mm 51 mm with flanges
<b>Weight</b>	10 grams
<b>Enclosure</b>	ABS plastic
<b>Interface</b>	USB, Standard-A connector
<b>Cable length</b>	6 feet
<b>Power requirement</b>	Powered by USB host
<b>Components</b>	Surface mount MEMS sensor design for high accuracy and compact form
<b>Operating temperature</b>	0 to 50 °Celsius
<b>Sampling rate</b>	100 Hz
<b>Range/Sensitivity</b>	$\pm 2 g$ or $\pm 6 g$ (user selectable)
<b>Resolution</b>	190 $\mu g \pm 5\%$ (at 2 <i>g</i> range)
<b>Noise density</b>	50 $\mu g/\sqrt{Hz}$ (at 2 <i>g</i> range)

---