

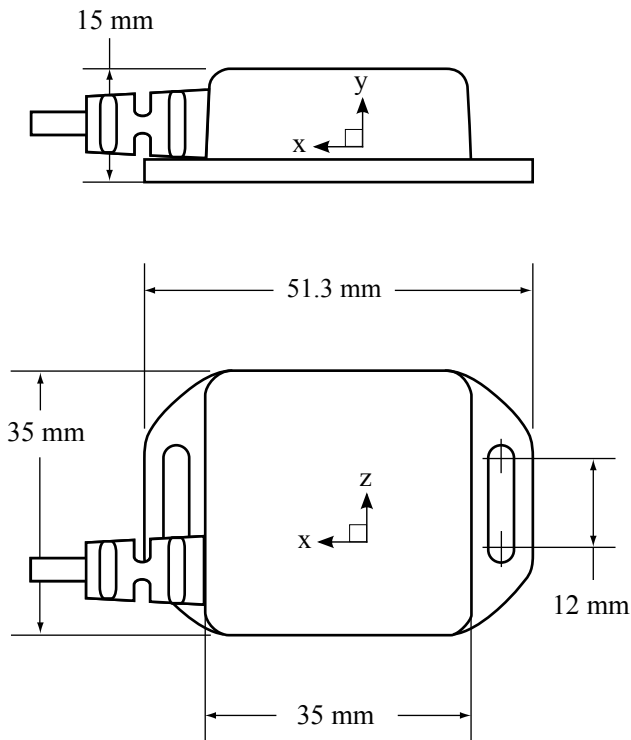
# MotionNode Accel Specification



**MotionNode Accel** is a triaxial accelerometer for use in low- $g$  acceleration sensing applications. Our sensor is extremely small, easy to use, and provides a flexible interface to real-time acceleration data.

## Key Features

- Small size, minimizes interference with natural motion
- Outputs 2  $g$  or 6  $g$  range in all three axes
- Accurate, general purpose accelerometer solution
- Simple USB connection
- Easy to use and integrate into your project or application
- Includes software to configure your sensor, preview output data, and record acceleration data
- Software Development Kit (SDK) provides real-time access to raw and calibrated sensor streams
- Supports Windows, macOS, and Linux



## Technical

---

|                              |   |
|------------------------------|---|
| <b>Physical size</b>         | 35 x 35 x 15 mm<br>51 mm with flanges                               |
| <b>Weight</b>                | 10 grams  |
| <b>Enclosure</b>             | ABS plastic   |
| <b>Interface</b>             | USB, Standard-A connector   |
| <b>Cable length</b>          | 6 feet  |
| <b>Power requirement</b>     | Powered by USB host   |
| <b>Components</b>            | Surface mount MEMS sensor design for high accuracy and compact form |
| <b>Operating temperature</b> | 0 to 50 °Celsius  |
| <b>Sampling rate</b>         | 100 Hz  |
| <b>Range/Sensitivity</b>     | $\pm 2 g$ or $\pm 6 g$ (user selectable)                            |
| <b>Resolution</b>            | 190 $\mu g \pm 5\%$ (at 2 $g$ range)                                |
| <b>Noise density</b>         | 50 $\mu g/\sqrt{Hz}$ (at 2 $g$ range)                               |

---